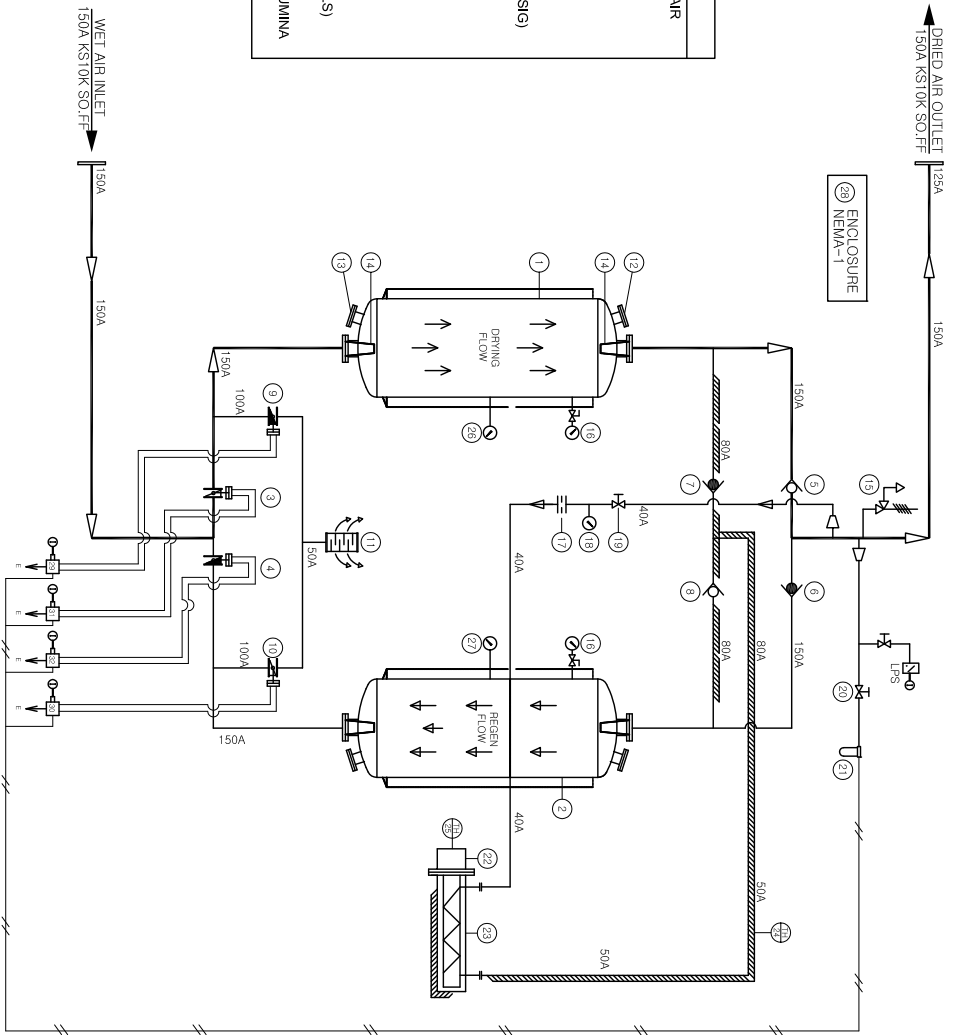


DESIGN No.	1501	REVISION	DATE	REVISOR	APPROVED
	A				

SPECIFICATION	
PROCESS	: COMPRESSED AIR
CAPACITY	: 5400 Nm ³ /hr
OPERATING PRESSURE	: 7.0 kg/cm ²
OPERATING TEMPERATURE	: 38°C (Max.40°C)
DESIGN PRESSURE	: 9.9 kg/cm ²
OUTLET DEW POINT	: -40°C at ATM.
NORMAL PURGE	: 432 Nm ³ /hr
PURGE CONTROL SET	: 3.0 kg/cm ² (42.6PSIG)
POWER SUPPLY	: V-, Ph- Hz
CONTROL POWER	: V-, Ph- Hz
ELECTRICALS	: NEMA-1
NEMA CYCLE	: 8.0 HOURS
DRYING	: 4.0 hrs
HEATING	: 2.5 hrs
COOLING	: 1.5 hrs
ELECTRIC HEATER	: 40 Kw(1STEP)
CORROSION ALLOWANCE	: +1.0mm(VESSEL S)
DESICCANT	: 1900kg/2Towers
ACTIVATED ALUMINA	: 5,000 kg



No.	DESCRIPTION
1	DESICCANT CHAMBER(L,T)
2	DESICCANT CHAMBER(R,T)
3	AIR INLET TOWER SERVICE VALVE(L,T)
4	AIR INLET TOWER SERVICE VALVE(R,T)
5	AIR OUTLET CHECK VALVE(L,T)
6	AIR OUTLET CHECK VALVE(R,T)
7	PURGE FLOW CHECK VALVE(L,T)
8	PURGE FLOW CHECK VALVE(R,T)
9	PURGE VALVE W/ACTUATOR(L,T)
10	PURGE VALVE W/ACTUATOR(R,T)
11	PURGE SIL ENCHER
12	DESICCANT FILL PORT
13	DESICCANT REMOVAL PORT
14	DESICCANT SCREEN
15	PRESSURE SAFETY VALVE
16	DESICCANT CHAMBER PRESSURE GAUGE & W/ISOLATION VALVE
17	PURGE NORMAL ORIFICE
18	PURGE FLOW GAUGE
19	PURGE ADJUSTING VALVE
20	PILOT AIR ISOLATION VALVE
21	AIR UNIT/FILTER REGULATOR(LUBRICATOR)
22	ELECTRIC HEATER
23	HEATER CHAMBER
24	HEATER CONTROL THERMOSTAT
25	OVER TEMPERATURE THERMOSTAT
26	DESICCANT CHAMBER TEMPERATURE GAUGE(L,T)
27	DESICCANT CHAMBER TEMPERATURE GAUGE(R,T)
28	ELECTRICAL ENCLOSURE
29	4 WAY PILOT AIR PURGE SOLENOID (L,T)
30	4 WAY PILOT AIR PURGE SOLENOID (R,T)
31	4 WAY PILOT A TOWER SERVICE SOLENOID(L,T)
32	4 WAY PILOT A TOWER SERVICE SOLENOID(R,T)
33	A TOWER DEPRESSURIZING VALVE W/ACTUATOR
34	B TOWER DEPRESSURIZING VALVE W/ACTUATOR

MARK INFORMATION	
⊖	E - EXHAUST
⊕	ELECTRICAL CONNECTION
→	CONTROL AIR SUPPLY
→	DRIVING FLOW
→	REGENERATION FLOW
→	FLOW

MARK	PARTS	SCALE	PARTS NO.	QTY	MATERIAL	DESCRIPTION	WEIGHT
APP.	S. LEE	N/A					
CHK.	J.P.KIM	A3					
DRW.	J.P.KIM	REF.DWG.NO.					
DATE	2015.09.15	UNIT	mm				
		DWG. NO.					



SMD KOREA CO., LTD
KOREA

DWG. NAME
DESICCANT AIR DRYER (Heater Purge Type)
SHP-5400 PROCESS & INSTRUMENT DWG.

DWG. NO. SK-SP600-002-0
SHEET 1/1